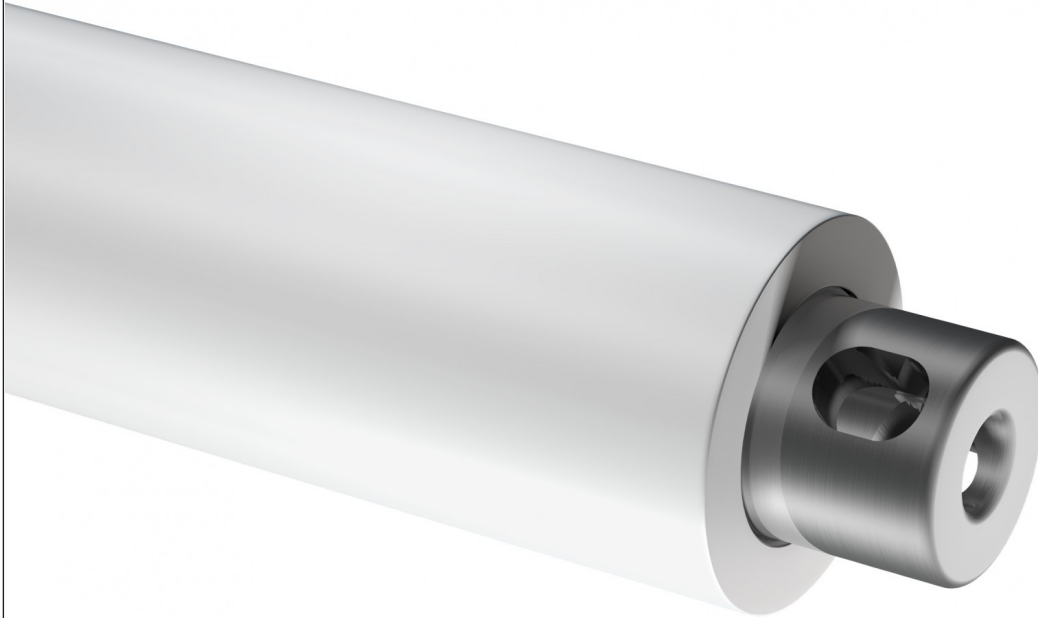


Silicone



ROSSINI



hardness
range 40-90



max load 15
[Kg/cm]



max temp
200°C



Speedwell
System

Silicone elastomer particularly indicated where non-stick properties are required. Suitable for extrusion coating, hot melt, cold seal and wax coating. It can work up to 200 °C temperature. Cleaning with 100% Ethyl alcohol.

All the special Rossini compounds are available both in Speedwell Sleeve configuration and Rubber roller.

structure

Roller with steel core and/or Speedwell sleeve with a specially formulated, fibreglass conical base. Silicone coating ground to measurement.

specifications

Colour	White - Red
Rubber-coated roller - Min/Max diameter	35 - 550 [mm] // 1.373" - 21.569"
Rubber-coated roller - Min/Max length including pins	150 - 5.000 [mm] // 5.882" - 196.078"
Speedwell Sleeve - Min/Max diameter	80 - 450 [mm] // 3.137" - 17.647"
Speedwell Sleeve - Min/Max length - Tolerance UNI:ISO 2768T1m	350 - 3500 [mm] // 13.725" - 137.255"
Coating thickness	5 - 35 [mm] // 0.197" - 1.373"
Min coating thickness to guarantee after grinding	12 [mm] // 4.72" - Grinding value at a minimum must be supplied by the client based on the possible adjustment of the printing press
Surface hardness - Tolerance +/-5 Shore A	40 - 90 Shore A
Maximum resistance to pressure	10 [Kg/cm]
Compressed air for sleeve assembly	12 - 20 [bar] // 174 - 290 PSI Minimum capacity: 700 [l/min] with air input having a free passage with D => 8[mm]
Maximum temperature resistance	200 °C - 392 °F
Working tolerance	External finishing with precision grinding (Ra=0.8) with T.I.R. < 0.03 [mm] when measured on a mandrel with T.I.R. <= 0.005 [mm]
Resistance to chemicals	Alcohol - Ethyl acetate - Water - Ozone

Il contenuto del presente documento non costituisce una garanzia di Rossini S.p.A. in particolare per quanto riguarda l'idoneità a scopi specifici dei prodotti in esso rappresentati; si invita, pertanto, il cliente a verificare preventivamente che il prodotto abbia le caratteristiche idonee all'uso cui verrà destinato. Rossini S.p.A. si riserva il diritto di aggiornare questa pubblicazione e apportarvi periodicamente variazioni di contenuto, anche di natura tecnica e/o commerciale, senza dare notifica di avvenuta revisione o modifica. Questo documento, i suoi loghi, marchi, specifiche, etc sono protetti dalle leggi sul copyright con tutti i diritti riservati.



Rossini World
Italy • France • Spain
Germany • United Kingdom
Romania • Brasil • China
United States • India

Rossini S.p.A. HeadQuarters
Via de Gasperi, 5
20027 Rescaldina - Milano - Italy
Tel. +39 0331 47 27 11 - Fax +39 0331 57 97 46
comm.debt@rossini-spa.it

WWW.ROSSINI-SPA.IT